



WE'VE BROKEN GROUND ON SECU HOSPICE HOUSE!

Through the generosity and compassionate spirit of many, including a \$1 million lead gift from the State Employees' Credit Union, the dream of a Hospice House is becoming a reality for the people of our rural mountain region.

After numerous years of thoughtful planning and fundraising, Hospice House Foundation of WNC hosted a groundbreaking ceremony on February 22, 2019 at 272 Maple St in Franklin, site for the future SECU Hospice House.



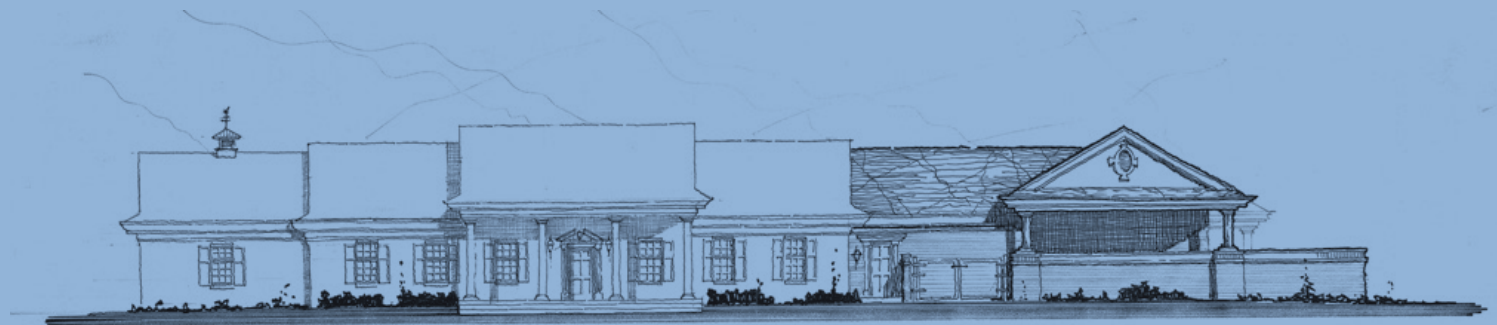
Center Front - Millicent Burke-Sinclair (CEO Four Seasons), Dr. Ron Fisher (Founding Board Member HHFWNC), Michele Alderson (Founding Board Member and President, HHFWNC), Sallee Coss (Founding Board Member HHFWNC). Others pictured include Four Seasons Foundation executive, SECU and government officials, project architect, and HHFWNC supporters.

Photo provided by Vickie Carpenter/The Macon County News.

Western Builders of Sylva, the construction contractor for this project, expects construction to be completed over the next year. Four Season Compassion for Life, a well-respected not-for-profit hospice care provider serving western North Carolina, will operate the facility.

SECU Hospice House will serve an estimated 200 hospice patients each year!

SECU Hospice House, a 6-bed hospice inpatient facility, will serve the six far western counties of North Carolina and northeast Georgia. It will increase the percentage of western North Carolina residents living within 35 miles of such a facility from 0% to an estimated 74%, filling a critical need in continuum of end-of-life care.



Artist Rendering of SECU Hospice House



A Message from the President

Dear Friends,

The mission of Hospice House Foundation of WNC has been to bring a Hospice House to western North Carolina. The dream began in 2005 when a group of hospice volunteers, a family physician, two local hospice medical doctors, and business people recognized our community's need for a hospice inpatient facility. This need was supported by a "Certificate of Need" issued by the State of North Carolina in 2011.

95% OF HOSPICE PATIENTS
ARE AGE 65 OR OLDER

25% OF OUR POPULATION
IS AGE 65 OR OVER!

Fast forward to today. We are only one year away from providing a full complement of quality end-of-life care in our rural mountain region; care that will help ensure comfort and dignity during one of life's most profound passages.

A sentiment I hold dear to my heart is, "When we are born, we need people to take care of us...and at the end, it is the same". This is so true, yet so many people in our community die alone, scared and in pain. Please consider a charitable donation during the final stretch of the Campaign for SECU Hospice House. Your support will help to ensure the people of our community receive compassionate, loving care during their final journey. To date, we have received \$3,750,000; 83% of our Campaign goal. Thank you!

Kind regards,

Michele R Alderson

Michele R. Alderson, President
Hospice House Foundation of WNC

*"We transition into this world surrounded by
love, nurturance, and acceptance.*

*We deserve to transition out of this world with
the same dignity, compassion, and caring."*



About SECU Hospice House

SECU Hospice House will provide a home-like setting with 24-hour inpatient and respite care, while providing for the physical, emotional, and spiritual suffering of people facing life’s final journey and easing the overwhelming burden felt by their loved ones.

SECU Hospice House will serve an estimated 200 hospice patients each year and feature:

- A therapeutic spa for patient comfort and relaxation and six large patient rooms, five with balconies overlooking a beautiful mountain-range, bestowing a sense of peace and serenity.
- Comfortable spaces for patients, their families, and visitors including a family room with fireplace, sun and screen rooms, kitchen and dining rooms, living room, laundry room, guest bath room, and chapel for spiritual reflection.
- Interdisciplinary team of compassionate hospice clinicians that bring specialized skill set and extensive knowledge about the dying process and end-of-life care, including a doctor, nurse, social worker, chaplain, CNA, and hospice volunteers.



Representative image of patient suite in a Hospice House

SECU Hospice House in Franklin will become the only free-standing inpatient hospice facility in North Carolina west of Asheville.

NC County/Town	Distance to Franklin	Distance to Asheville
Macon County – Highlands	35 minutes	1.8 hours
Jackson County – Sylva	25 minutes	50 minutes
Jackson County – Cashiers	50 minutes	1.5 hours
Swain County – Bryson City	40 minutes	1.1 hours
Clay County – Hayesville	40 minutes	1.9 hours
Cherokee County – Murphy	1 hour	2 hours
Graham County – Robbinsville	1 hour	1.7 hours

Note: Distances determined via Google search.

News briefs



Grants have been important to the Campaign for SECU Hospice House, representing roughly 40% of funds raised. Most recently, HHFWNC received the following sizeable grants:

- \$100,000 - The Cannon Foundation
- \$ 25,000 – Entegra Bank
- \$ 15,000 – Janirve Legacy Fund and Joseph B. Popplewell Family Endowment Fund of the Community Foundation of Western NC
- \$ 10,000 – Resurrection Lutheran Church

Faith-Based organizations provide generous support!

Over 30 regional churches have already shown their support for SECU Hospice House, with contributions totaling nearly \$75,000 to date. In recognition of this benevolent funding, a plaque with the names of faith-based supporters will be displayed in the chapel of SECU Hospice House. It would be our honor to add additional Church names to this plaque. Church members – please speak with your church leadership about your congregation’s support.

A sincere and heartfelt “thank you” to all of Hospice House Foundation of WNC’s 1,400 supporters and faithful volunteers. It will be through this support that the people of our community, who are facing life’s final journey, will have a resource they and their families can easily turn to for physical, emotional, and spiritual relief at a time of great uncertainty.

Members of the Board



Hospice House Foundation of WNC Board of Directors

Michele Alderson, President	Patricia M. Cabe
Dr. W. Banks Hinshaw, Vice President	Kathryn King-Cotton
John Barbee CPA, Treasurer	Beth Nease
Sallee Coss, Secretary	Arthur Paoletti
Carolyn Timmins, Secretary	Sara Stevens
Elise Boren	William Trotter, III Esq.

Dr. Ron Fisher, Director Emeritus
Evie Byrnes, Director in Memoriam

Past Hospice House Foundation of WNC Board Members

Marvin Bachtel **	Cynthia Miles
John Baldwin	Steve Mills*
Susan Bauknight	Harriett Morris
Dr. Todd Davis	Reginald Nichols*
Tania Duncombe	Carole Roy
Judson Hall	Ann Schmidt
Rev. Patricia Heffernan	Ben Swafford
Carolyn Huscusson	Ben Utley
Jim Lau	Dr. Charlie Vargas
Bess Ledford	Maureen Williams*
Rev. Timothy McQuitty	

* Four Seasons Representatives
** Deceased

YOU CAN BE PART OF THIS COMPASSIONATE INITIATIVE!

Ways you can help and/or get involved...

VOLUNTEER / WORK

Hospice House Foundation of WNC would welcome volunteers to help with fundraising initiatives during the Campaign’s final stretch.

Contact Michele Alderson at: (828) 524-6375

Four Seasons, The Care You Trust will operate within Franklin’s SECU Hospice House once constructed (early 2020). New job and volunteer opportunities will be available to support patients and families.



Contact Four Seasons to learn more: (828) 692-6178

SUPPORT

Although construction of SECU Hospice House has begun, financial support is still needed to complete the Campaign.

Your charitable gift, no matter what the size, will help close to gap to our Campaign goal. Use the enclosed donation envelope, or make your gift online - www.hhfwnc.org. Contact Michele Alderson to learn more about the project and impact of your support: (828) 524-6375



PO Box 815 • Franklin, NC 28744
www.hhfwnc.org • info@hhfwnc.org • 828-524-6375